



# COOLEMAN RIDGE PARK CARE GROUP

## Newsletter June 2003

### Previous Sunday meeting, May 18th

**Q:** When 10 people chip thistles for 2 hours, how many thistles are left?

**A:** Lots.

However, the area covered was quite extensive so that next year it should be possible see the impact. The thistles, being in the rosette stage, were easy to creep up on. In some, development looked stunted and we speculated whether this was a result of the boom-spraying project. If so, the effect was patchy. Eucalypts, Wattles and Allocasuarinas showed recovery from the fire, and we encountered scattered native forbs. ☼

### Next Sunday meeting, June 15th

Elizabeth cares for the area bordering her garden. Since her house was the only one to survive in the immediate neighbourhood she will have interesting observations to make about the behaviour of the fire there. She has not weeded since the fire and promises not to start before we come so we can compare regeneration there with the surroundings.

- 1.30 - 4 pm
- meet at 32 Monkman St, Chapman
- bring hat, gloves, drink, snack, weeder, raincoat if it is wet

Park on the road and walk up to the house ☼

### Future programme

July 20<sup>th</sup> to be decided  
August 17<sup>th</sup> to be decided ☼

### May log

090503 *Microlaena stipoides*, *Bothriochloa macra*,  
\**Hypochaeris radicata*, \**Chondrilla juncea*, \**Echium plantagineum*, \**Paspalum dilatatum* flowering.  
*Melichrus urceolatus* with basal shoots.  
180503 *Allocasuarina verticillata* with basal shoots,  
Arawang  
230503 *Oxalis* sp. flowering  
300503 \**Petrorhagia nanteuilii*, \**Marrubium vulgare* seedlings ☼

### The Tree Survey

Even if most of the tree photos were destroyed by the January fire, some remain since Naarilla has two full books with photos of several hundred trees. These have now been scanned so, wise by experience, we do have a backup. ☼

### Fences

Fencing contractors are replacing wooden posts with metal, and re-hanging gates. The Kathner Street entrance is now closed off with a row of boulders – some of which are thought to have come from inside the boundary. ☼

### Broad leaf spraying (cont)

Vivien reports that most of the Ridge has been boom-sprayed; the rocky areas inaccessible to the vehicle she intends covering with a back-pack spray. There is conspicuous yellowing of some of the \**Echium*. In my Kathner St area \**Erodium cicutarium* was looking very sickly but is now rebounding. Some \**Trifolium subterraneum* and \**Chondrilla juncea* also looked bad, but there is vigorous growth of new \**Trifolium* seedlings. There was also yellowing of regrowth from some of the blackened clumps of \**Phalarisa aquatica*. As promised, the natives seemed to come through unscathed. ☼

### Comparison

Early in May I made a quick plant survey where we held our annual evening picnic and star-gazing night.

Both trees are blasted: No 1:60 (*E. rossii*) and

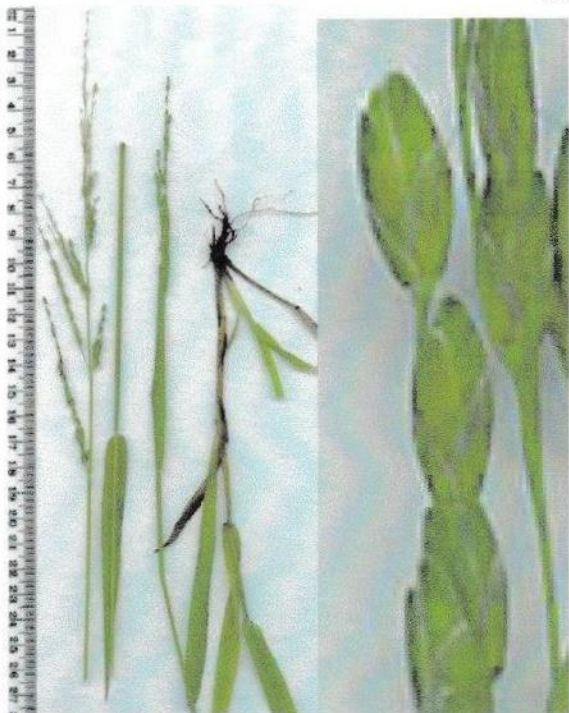
No. 1:61 (*E. macrorhyncha*)

	Native	Exotic	Not recorded
150899	14		
150200	25		22
090503	14		8

It's a pity the seasons don't match up, but those of you who spent time chipping out \**Marrubium vulgare* will be pleased to know it has not (yet) reappeared. The thistles, on the other hand, offer a challenge. ☼



## What's around



Family: POACEAE

\**Ehrharta erecta*

Panic Veldtgrass

Tufted perennial with delicate, annual-like root stock

Native of South Africa

### Thought of the week

Irresponsible dog-owners should be kept on a lead ☼

### Rabbits

We passed a burrow on the side of Mt Arawang as we walked up to the thistle patch. On Fencepost Hill rabbits are feasting on the juicy \**Trifolium subterraneum* plants. ☼

### Attachment

The half-yearly survey form is included with this newsletter. Please fill it in and return to Janice. This will give her a more comprehensive view of what is happening on the Ridge and give her some substance to report to CNP.

Janice: phone 6288 3953 (h) e-mail  
[janice.paull@aph.gov.au](mailto:janice.paull@aph.gov.au) ☼

### Web address

is [www.webone.com.au/~kpelling](http://www.webone.com.au/~kpelling)

Check for up-dates. ☼



Family: MALACEAE

\**Pyracantha angustifolia*

*angusti*: L narrow; *folia* L leaves

Stout spiny shrub. Flowers with 20 stamens

Native of China ☼

### Classification of the Plant Kingdom

Notes from Gwen Harden and John Williams' booklet  
*How to Identify Plants (1990)*

*All plants may readily be separated into two divisions, plants without seeds and plants with seeds. The former include the bacteria, seaweeds, pond-slimes, moulds, fungi, lichens, liverworts, mosses, club-mosses and ferns.*

*The Gymnosperms have seeds which are not enclosed in an ovary but naked on seed leaves, or scales, which are usually spirally arranged in cones. This group includes the cycads and the conifers.*

*Angiosperms are the flowering plants with their ovules and seeds enclosed in an ovary. The angiosperms are divided into the monocotyledons and the dicotyledons.*

*The monocotyledons:*

- produce only one seed leaf on germination
- have parallel venation in leaf
- have parts of flowers in 3's
- have fibrous root system

*The dicotyledons:*

- produce two seed leaves
- have reticulate venation in leaf
- have parts of flower in 4's and 5's
- have taproot system. ☼